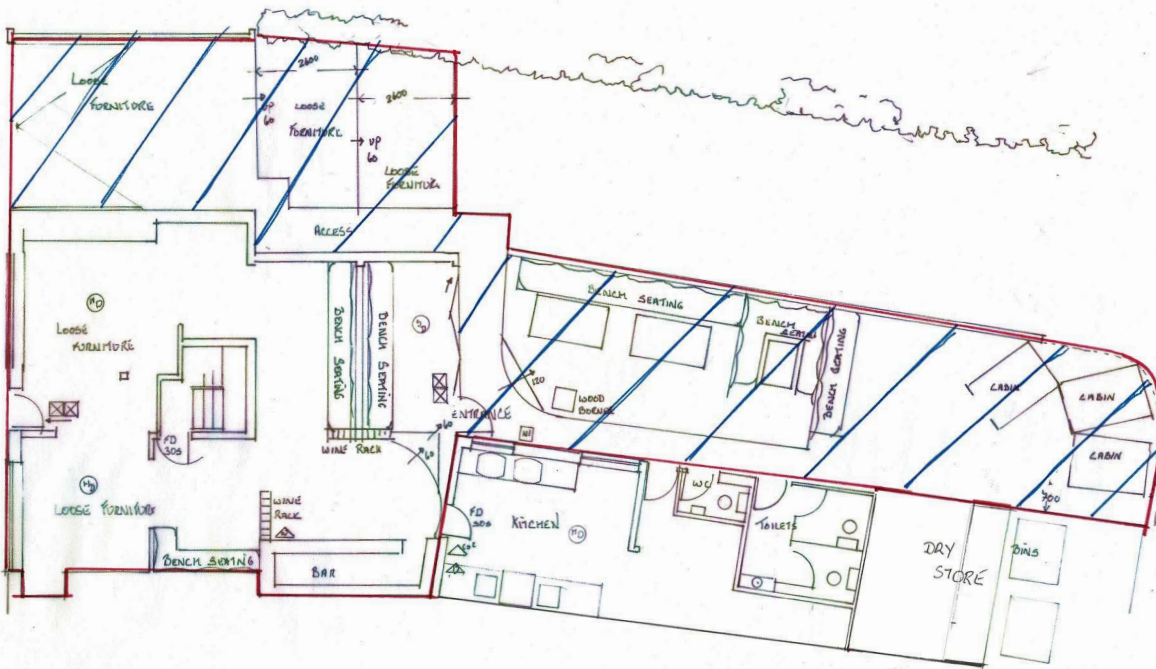


APPENDIX 3



- FD30S FIRE RESISTING DOOR WITH SMOKE SEAL AND INTUMESCENT STRIP
- SC POSITIVE CLOSING DEVICE
- SC/A A MAGNETIC HOLD OPEN DEVICE
- VP VISION PANEL
- PB DOORS FITTED WITH PANIC BOLTS WITH NOTICE
- LOCK WITHOUT KEY OR BARREL BOLT
- NOTICES AND SIGNS TO ACCORD WITH BS5499:
- N1 FIRE NOTICE
- N6 FIRE DOOR KEEP SHUT
- N9 TO BE UNLOCKED WHEN PREMISES ARE OCCUPIED
- E INTERNALLY ILLUMINATED EXIT PICTOGRAM (ARROW INDICATES DIRECTION OF ESCAPE) (M = MAINTAINED)
- AREA COVERED BY EMERGENCY LIGHTING
- FIRE ALARM CALL POINT
- AUDIBLE WARNING DEVICE
- AREA COVERED BY HEAT DETECTOR
- AREA COVERED BY SMOKE DETECTOR (= OPTICAL)
- FIRE EXTINGUISHER: WATER
- FIRE EXTINGUISHER: FOAM
- FIRE EXTINGUISHER: DRY POWDER
- FIRE EXTINGUISHER: CARBON DIOXIDE
- CCTV
- EXTENT OF LICENSED AREA ALL ACTIVITIES INCLUDING DRINKING
- EXTERIOR LICENSED AREA

Site INDIA COTTAGE RINGWOOD
Dwg title LICENSING PLAN MARCH 2021
Scale 1:100 @A3